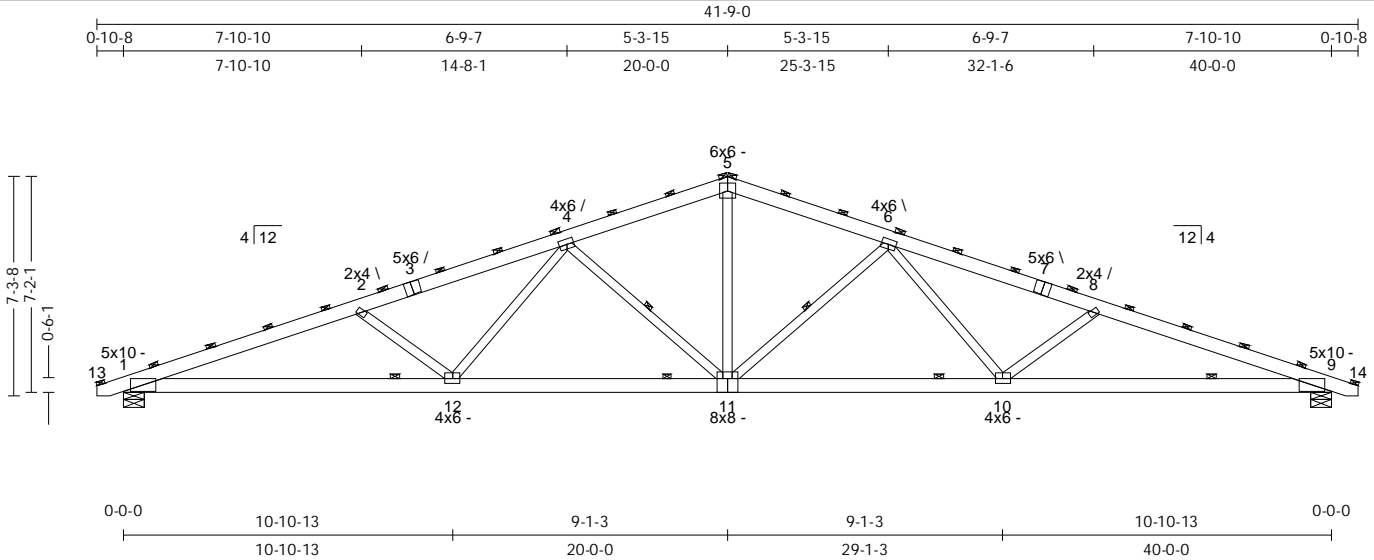


### CMT Components

8319 Ashridge Arnhem  
Sardinia, OH 45171  
(937) 446-3400

Truss: T40STK  
Job: Stock 2026  
Designer: Joe Willis  
Date: 04/14/26 07:44:54  
Page: 1 of 1

SPAN 40-0-0	PITCH 4/12	QTY 1	OHL 0-10-8	OHR 0-10-8	CANTL 0-0-0	CANTR 0-0-0	PLYS 1	SPACING 48 in	WGT/PLY 242 lbs
----------------	---------------	----------	---------------	---------------	----------------	----------------	-----------	------------------	--------------------



All plates shown to be Eagle 20 unless otherwise noted.

Loading (psf)	General	CSI	Deflection	L/	(loc)	Allowed
TCLL: 20	Bldg Code: IBC 2018/	TC: 0.68 (8-9)	Vert TL: 0.57 in	L/815	(10-11)	L/180
GSL: 25	TP1 1-2014	BC: 0.83 (9-10)	Vert LL: 0.4 in	L/999	11	L/240
TCDL: 4	Rep Mbr: No	Web: 0.39 (5-11)	Horz TL: 0.17 in		9	
BCLL: 0	Lumber D.O.L.: 125 %					
BCDL: 4						

#### Reaction

JT	Brg Combo	Brg Width	Rqd Brg Width	Max React	Max Grav Uplift	Max MWFRS Uplift	Max C&C Uplift	Max Uplift	Max Horiz
1	1	8.5 in	2.74 in	2,324 lbs	-	-131 lbs	-336 lbs	-336 lbs	-25 lbs
9	1	8.5 in	2.74 in	2,324 lbs	-	-131 lbs	-336 lbs	-336 lbs	-

#### Material

TC: SYP#1 2 x 6  
BC: SYP#1 2 x 6  
Web: SYP#2 2 x 4

#### Bracing

TC: Purlins at 24" OC, Purlin design by Others.  
BC: Sheathed or Purlins at 9-0-0, Purlin design by Others.  
Web: One Midpoint Row: 4-11, 6-11

#### Loads

- 1) This truss has been designed for the effects of balanced (16.5 psf) and unbalanced sloped roof snow loads in accordance with ASCE7 - 10 with the following user defined input: 25 psf GSL, Terrain B, Exposure (Ce = 1.0), Thermal (Ct = 1.10), DOL = 1.15. Ventilated. Unobstructed slippery surface. If the roof configuration differs from hip/gable, Building Designer shall verify snow loads.
- 2) This truss has been designed to account for the effects of ice dams forming at the eaves.
- 3) This truss has been designed for the effects of wind loads in accordance with ASCE7 - 10 with the following user defined input: 115 mph (Factored), Exposure B, Enclosed, Gable/Hip, Risk Category II, h = 15 ft, Not End Zone Truss, Both end webs considered. DOL = 1.60
- 4) Minimum storage attic loading has not been applied in accordance with IBC 1607.1
- 5) In accordance with IBC 1607.1, minimum BCLL's do not apply
- 6) This truss is designed as an agricultural truss. See BCS10 for installation and temporary bracing.

#### Member Forces

Table indicates: Member ID, max CSI, max tension force, (max compression force). Only forces greater than 300lbs are shown in this table.

TC	1-2	0.680	864 lbs	(-5,797 lbs)	4-5	0.333	618 lbs	(-3,656 lbs)	6-8	0.470	745 lbs	(-5,151 lbs)
	2-4	0.470	745 lbs	(-5,151 lbs)	5-6	0.333	618 lbs	(-3,656 lbs)	8-9	0.680	864 lbs	(-5,796 lbs)
BC	9-10	0.835	5,418 lbs	(-720 lbs)	10-11	0.562	4,268 lbs	(-482 lbs)	11-12	0.562	4,268 lbs	(-482 lbs)
	12-1	0.835	5,419 lbs	(-720 lbs)								
Web	2-12	0.237		(-822 lbs)	4-11	0.321		(-1,272 lbs)	6-11	0.321		(-1,272 lbs)
	4-12	0.196	869 lbs		5-11	0.393	1,739 lbs		6-10	0.196	869 lbs	

#### Notes

- 1) Unless noted otherwise, do not cut or alter any truss member or plate without prior approval from a Professional Engineer.
- 2) The fabrication tolerance for this roof truss is 20 % (Cq = 0.80).
- 3) Building Designer shall verify self weight of the truss and other dead load materials do not exceed TC DL 4 psf.
- 4) Building Designer shall verify self weight of the truss and other dead load materials do not exceed BCDL 4 psf.
- 5) Design assumes minimum 2x (vertical orientation, visually graded) purlins attached to the TC at purlin spacing shown with at least 2-10d nails.
- 6) Brace bottom chord with approved sheathing or purlins per Bracing Summary.
- 7) Lateral bracing shown is for illustration purposes only and may be placed on either edge of truss member.
- 8) A creep factor of 2.00 has been applied for this truss analysis.
- 9) The "SYP" label shown in the "Material Summary" above indicates the new SPIB design values effective June 1, 2013 were used.
- 10) ↕ indicates lateral bracing required perpendicular to the plane of the truss at either the midpoint (one shown) or third points (two shown), bracing by others. See BCS1-B3 for additional information.
- 11) Listed wind uplift reactions based on MWFRS & C&C loading.

**WARNING:** Verify all design parameters and follow all notes on this drawing and in the Eagle Metal Design Notes. This design is for an individual building component (a truss), not a truss system, and is based only on parameters shown and provided by the Building Designer. The applicability of the design parameters must be verified by the Building Designer and should properly incorporate this design into the overall building design before use. Bracing shown is only to prevent buckling of individual truss web and/or chord members. Additional temporary and permanent bracing is always required to prevent collapse and provide stability. Design valid only when Eagle Metal connectors are used. A seal on this drawing indicates acceptance of professional engineering responsibility solely for the truss component design shown.

TrueBuild® Truss Software v5.7.21  
Eagle Metal Products