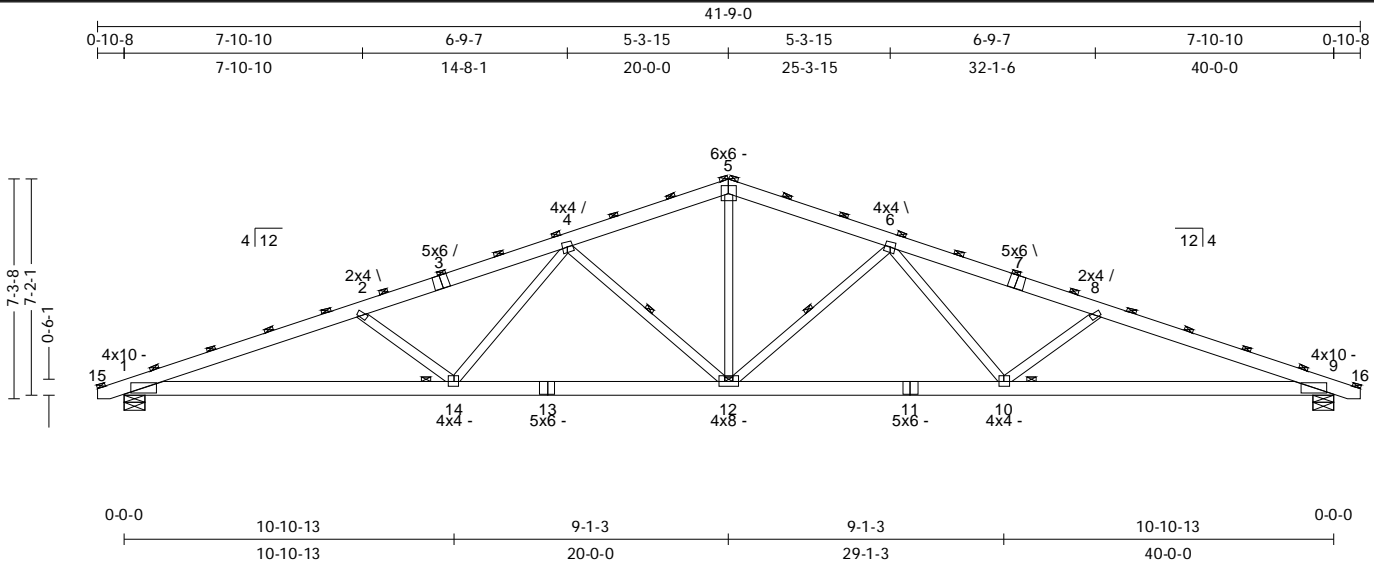


SPAN 40-0-0	PITCH 4/12	QTY 1	OHL 0-10-8	OHR 0-10-8	CANTL 0-0-0	CANTR 0-0-0	PLY(S) 1	SPACING 48 in	WGT/PLY 242 lbs
----------------	---------------	----------	---------------	---------------	----------------	----------------	-------------	------------------	--------------------



All plates shown to be Eagle 20 unless otherwise noted.

Loading (psf)	General	CSI	Deflection	L/	(loc)	Allowed
TCLL : 20	Bldg Code : IBC 2018/	TC : 0.68 (8-9)	Vert TL : 0.57 in	L / 815	(11-12)	L / 180
GSL : 25	TP1 1-2014	BC : 0.83 (9-10)	Vert LL : 0.4 in	L / 999	12	L / 240
TCDL : 4	Rep Mbr : No	Web : 0.39 (5-12)	Hoiz TL : 0.17 in		9	
BCLL : 0	Lumber D.O.L. : 125 %					
BCDL : 4						

**Reaction**

JT	Brg Combo	Brg Width	Rqd Brg Width	Max React	Max Grav Uplift	Max MWFRS Uplift	Max C&C Uplift	Max Uplift	Max Horiz
1	1	8.5 in	2.74 in	2,324 lbs	-	-131 lbs	-75 lbs	-131 lbs	-25 lbs
9	1	8.5 in	2.74 in	2,324 lbs	-	-131 lbs	-75 lbs	-131 lbs	-

**Material**

TC: SYP#1 2 x 6  
 BC: SYP#1 2 x 6  
 Web: SYP#2 2 x 4

**Bracing**

TC: Purlins at 24" OC, Purlin design by Others.  
 BC: Sheathed or Purlins at 10-0-0, Purlin design by Others.  
 Web: One Midpoint Row: 4-12, 6-12

**Loads**

- This truss has been designed for the effects of balanced (13.2 psf) and unbalanced sloped roof snow loads in accordance with ASCE7 - 16 with the following user defined input: 25 psf GSL, Terrain B, Exposure (Ce=1.0), Thermal (Ct=1.10), DOL=1.15. Ventilated. Unobstructed slippery surface. If the roof configuration differs from hip/gable, Building Designer shall verify snow loads.
- This truss has been designed to account for the effects of ice dams forming at the eaves.
- This truss has been designed for the effects of wind loads in accordance with ASCE7 - 16 with the following user defined input: 115 mph (Factored), Exposure B, Enclosed, Gable/Hip, Risk Category I, h = 15 ft, Not End Zone Truss, Both end webs considered. DOL=1.60
- Minimum storage attic loading has not been applied in accordance with IBC 1607.1
- In accordance with IBC 1607.1, minimum BCLL's do not apply
- This truss is designed as an agricultural truss which for the purposes of this program is defined as a structure that represents a low hazard to people and property See BCSI-10 for installation and temporary bracing.

**Member Forces**

Table indicates: Member ID, max CSI, max tension force, (max compression force). Only forces greater than 300lbs are shown in this table.

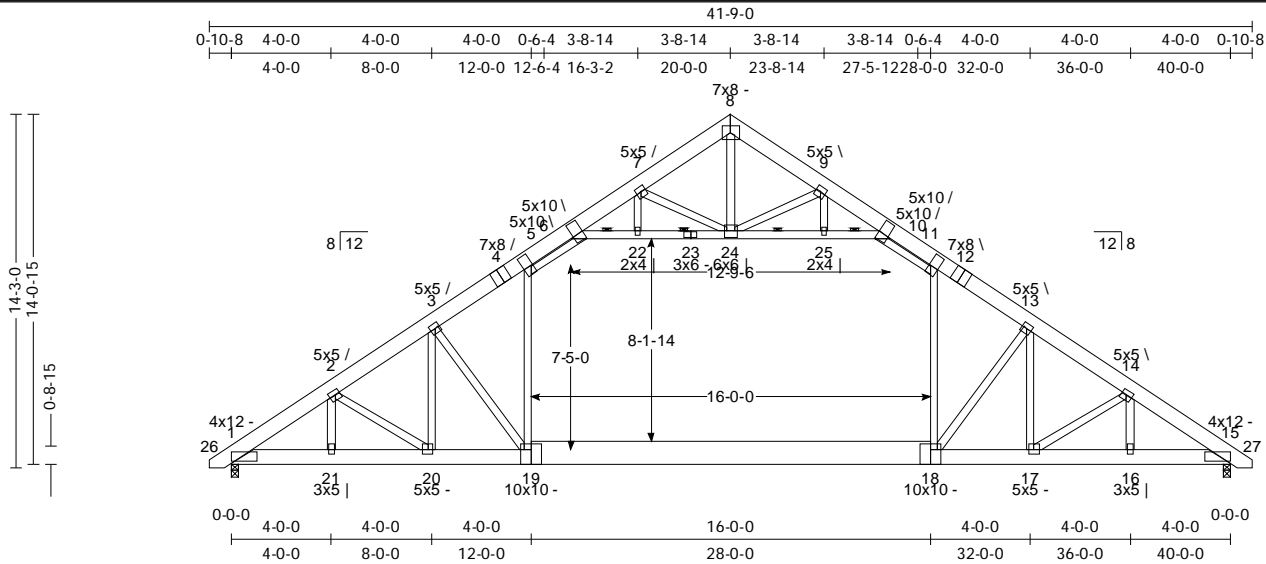
TC	1-2	0.680	358 lbs	(-5,796 lbs)	4-5	0.333	(-3,656 lbs)	6-8	0.470	(-5,151 lbs)
	2-4	0.470		(-5,151 lbs)	5-6	0.333	(-3,656 lbs)	8-9	0.680	358 lbs
BC	9-10	0.835	5,418 lbs		10-12	0.562	4,268 lbs	12-14	0.562	4,268 lbs
Web	2-14	0.237		(-822 lbs)	4-12	0.303	(-1,221 lbs)	6-12	0.303	(-1,221 lbs)
	4-14	0.196	869 lbs		5-12	0.393	1,739 lbs	6-10	0.196	869 lbs
								8-10	0.237	(-822 lbs)

**Notes**

- Unless noted otherwise, do not cut or alter any truss member or plate without prior approval from a Professional Engineer
- The fabrication tolerance for this roof truss is 20% (Cq=0.80).
- Building Designer shall verify self weight of the truss and other dead load materials do not exceed TC DL 4 psf.
- Building Designer shall verify self weight of the truss and other dead load materials do not exceed BCDL 4 psf.
- Design assumes minimum 2x (vertical orientation, visually graded) purlins attached to the TC at purlin spacing shown with at least 2-10d nails.
- Brace bottom chord with approved sheathing or purlins per Bracing Summary
- Lateral bracing shown is for illustration purposes only and may be placed on either edge of truss member.
- A creep factor of 2.00 has been applied for this truss analysis.
- The "SYP" label shown in the "Material Summary" above indicates the new SP1B design values effective June 1, 2013 were used.
- ☒ Indicates lateral bracing required perpendicular to the plane of the truss at either the midpoint (one shown) or third points (two shown), bracing by others. See BCSHB3 for additional information.
- Listed wind uplift reactions based on MWFRS & C&C loading.

**WARNING:** Verify all design parameters and follow all notes on this drawing and in the Eagle Metal Design Notes. This design is for an individual building component (a truss), not a truss system, and is based only on parameters shown and provided by the Building Designer. The applicability of the design parameters must be verified by the Building Designer and should properly incorporate this design into the overall building design before use. Bracing shown is only to prevent buckling of individual truss web and/or chord members. Additional temporary and permanent bracing is always required to prevent collapse and provide stability. Design valid only when Eagle Metal connectors are used. A seal on this drawing indicates acceptance of professional engineering responsibility solely for the truss component design shown.

SPAN 40-0-0	PITCH 8/12	QTY 1	OHL 0-10-8	OHR 0-10-8	CANTL 0-0-0	CANTR 0-0-0	PLY(S) 1	SPACING 24in	WGT/PLY 415 lbs
----------------	---------------	----------	---------------	---------------	----------------	----------------	-------------	-----------------	--------------------



All plates shown to be Eagle 20 unless otherwise noted.

Loading (psf)	General	CSI	Deflection	L/	(loc)	Allowed
TCLL: 21	Bldg Code: IBC 2021/	TC: 0.85 (3-5)	Vert TL: 0.66 in	L / 719	(18-19)	L / 360
GSL: 25	TP1 1-2014	BC: 0.72 (17-18)	Vert LL: 0.32 in	L / 999	(18-19)	L / 480
TCDL: 10	Rep Mbr: No	Web: 0.52 (3-19)	Hoiz TL: 0.07 in		15	
BCLL: 0	Lumber D.O.L.: 115 %					
BCDL: 10						

### Reaction

JT	Brg Combo	Brg Width	Rqd Brg Width	Max React	Max Grav Uplift	Max MWFRS Uplift	Max C&C Uplift	Max Uplift	Max Horiz
1	1	3.5 in	2.35 in	2,833 lbs					84 lbs
15	1	3.5 in	2.34 in	2,830 lbs					

### Material

TC: SYP#1 2 x 8  
BC: SYP2400/2.0 2 x 8 except:  
SYP2400/2.0 2 x 12: 18-19  
Web: SYP#2 2 x 4

### Bracing

TC: Sheathed or Purlins at 2-8-0, Purlin design by Others.  
BC: Sheathed or Purlins at 10-0-0, Purlin design by Others.  
Web: One Midpoint Row: 6-23, 23-10

### Loads

- This truss has been designed for the effects of balanced (15.9 psf) and unbalanced sloped roof snow loads in accordance with ASCE7 - 16 with the following user defined input: 25 psf GSL, Terrain B, Exposure (Ce = 1.0), Thermal (Ct = 1.00), DOL = 1.15. If the roof configuration differs from hip/gable, Building Designer shall verify snow loads.
- This truss has been designed to account for the effects of ice dams forming at the eaves.
- This truss has been designed for the effects of wind loads in accordance with ASCE7 - 16 with the following user defined input: 115 mph (Factored), Exposure B, Enclosed, Gable, Risk Category II, h=B-L=15 ft, End Zone Truss, Both end webs considered. DOL=1.60
- Minimum storage attic loading has not been applied in accordance with IBC 1607.1
- In accordance with IBC 1607.1, minimum BCLL's do not apply

### Member Forces

Table indicates: Member ID, max CSI, max tension force, (max compression force). Only forces greater than 300lbs are shown in this table.

TC	1-2	0.241	(-4,529 lbs)	6-7	0.741	(-881 lbs)	10-11	0.823	(-3,205 lbs)
	2-3	0.236	(-4,367 lbs)	7-8	0.061	(-485 lbs)	11-13	0.847	(-4,397 lbs)
	3-5	0.850	(-4,398 lbs)	8-9	0.062	(-485 lbs)	13-14	0.236	(-4,360 lbs)
	5-6	0.827	(-3,210 lbs)	9-10	0.751	(-860 lbs)	14-15	0.241	(-4,523 lbs)
BC	15-16	0.205	3,690 lbs	17-18	0.721	3,629 lbs	19-20	0.710	3,635 lbs
	16-17	0.240	3,690 lbs	18-19	0.446	3,410 lbs	20-21	0.239	3,694 lbs
Web	3-20	0.238	(-532 lbs)	22-24	0.413 <th>(-3,049 lbs)</th> <td>10-25</td> <td>0.378 <th>(-3,090 lbs)</th> </td>	(-3,049 lbs)	10-25	0.378 <th>(-3,090 lbs)</th>	(-3,090 lbs)
	3-19	0.517	(-739 lbs)	7-24	0.102 <th>(-342 lbs)</th> <td>11-18</td> <td>0.481</td> <td>1,961 lbs</td>	(-342 lbs)	11-18	0.481	1,961 lbs
	5-19	0.480	1,956 lbs	9-24	0.095 <th>(-318 lbs)</th> <td>13-18</td> <td>0.509 <th>(-729 lbs)</th> </td>	(-318 lbs)	13-18	0.509 <th>(-729 lbs)</th>	(-729 lbs)
	6-22	0.375	(-3,069 lbs)	24-25	0.415 <th>(-3,070 lbs)</th> <td>13-17</td> <td>0.242</td> <th>(-541 lbs)</th>	(-3,070 lbs)	13-17	0.242	(-541 lbs)
	7-22	0.104	424 lbs	9-25	0.100	406 lbs			

### Notes

- Unless noted otherwise, do not cut or alter any truss member or plate without prior approval from a Professional Engineer.
- Attic floor area has been designed as a living area with 40 psf floor live load and a 10 psf floor dead load, and the interior vertical webs and ceiling has been designed for a 10 psf dead load.
- The fabrication tolerance for this roof truss is 20 % (Cq = 0.80).
- Brace bottom chord with approved sheathing or purlins per Bracing Summary.
- At least one web of this truss has been designed with a panel point in the web. All panel points on such webs shall be braced laterally perpendicular to the plane of the truss. Lateral braces shall be installed within 6" of each web panel point.
- Lateral bracing shown is for illustration purposes only and may be placed on either edge of truss member.
- A creep factor of 2.00 has been applied for this truss analysis.
- The "SYP" label shown in the "Material Summary" above indicates the new SP18 design values effective June 1, 2013 were used.
- Indicates lateral bracing required perpendicular to the plane of the truss at either the midpoint (one shown) or third points (two shown), bracing by others. See BCSEB3 for additional information.

**WARNING: Verify all design parameters and follow all notes on this drawing and in the Eagle Metal Design Notes.**  
This design is for an individual building component (a truss), not a truss system, and is based only on parameters shown and provided by the Building Designer. The applicability of the design parameters must be verified by the Building Designer and should properly incorporate this design into the overall building design before use. Bracing shown is only to prevent buckling of individual truss web and/or chord members. Additional temporary and permanent bracing is always required to prevent collapse and provide stability. Design valid only when Eagle Metal connectors are used. A seal on this drawing indicates acceptance of professional engineering responsibility solely for the truss component design shown.

**CMT Components**  
8319 Ashridge Arnhjem  
Sardinia, OH 45171  
(937) 446-3400

Truss: Attic  
Job:  
Designer:  
Date:  
Page:

SPAN	PITCH	QTY	OHL	OHR	CANTL	CANTR	PLY(S)	SPACING	WGT/PLY
40-0-0	8/12	1	0-10-8	0-10-8	0-0-0	0-0-0	1	24 in	415 lbs

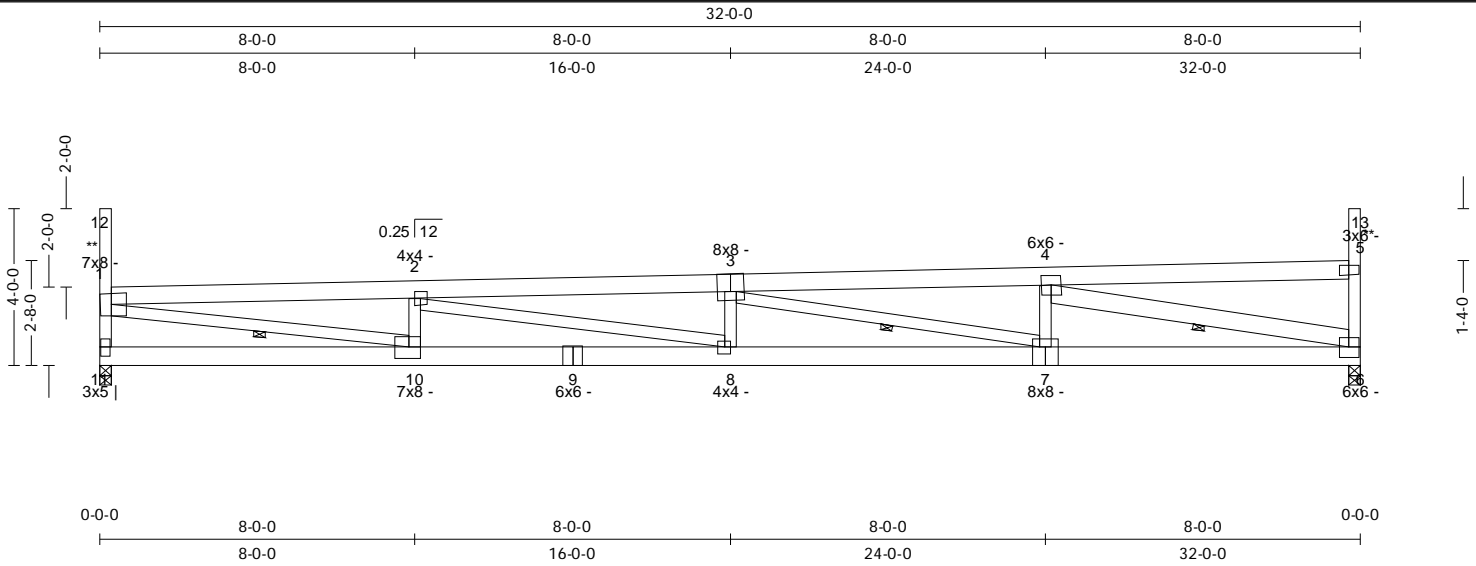
10) Listed wind uplift reactions based on MWFRS & C&C loading.

11) Bottom chord in the open area of this truss meets L/480 for live load and L/360 for total load deflection criteria.

**WARNING:** Verify all design parameters and follow all notes on this drawing and in the Eagle Metal Design Notes.  
This design is for an individual building component (a truss), not a truss system, and is based only on parameters shown and provided by the Building Designer. The applicability of the design parameters must be verified by the Building Designer and should properly incorporate this design into the overall building design before use. Bracing shown is only to prevent buckling of individual truss web and/or chord members. Additional temporary and permanent bracing is always required to prevent collapse and provide stability. Design valid only when Eagle Metal connectors are used. A seal on this drawing indicates acceptance of professional engineering responsibility solely for the truss component design shown.

TrueBuild® Truss Software v5.8.14  
Eagle Metal Products

SPAN 32-0-0	PITCH 0.25/12	QTY 1	OHL 0-0-0	OHR 0-0-0	CANTL 0-0-0	CANTR 0-0-0	PLY(S) 1	SPACING 24 in	WGT/PLY 209 lbs
----------------	------------------	----------	--------------	--------------	----------------	----------------	-------------	------------------	--------------------



All plates shown to be Eagle 20 unless otherwise noted.

Loading (psf)	General	CSI	Deflection	L/	(loc)	Allowed
TCLL : 21	Bldg Code : IBC 2021/	TC : 0.58 (2-3)	Vert TL : 0.89 in	L / 426	(8-9)	L / 360
GSL : 25	TP1 1-2014	BC : 0.85 (7-8)	Vert LL : 0.45 in	L / 834	(8-9)	L / 480
TCDL : 10	Rep Mbr : No	Web : 0.78 (1-10)	Hoiz TL : 0.1 in		6	
BCLL : 0	Lumber D.O.L. : 115 %					
BCDL : 10						

### Reaction

JT	Brg Combo	Brg Width	Rqd Brg Width	Max React	Max Grav Uplift	Max MWFRS Uplift	Max C&C Uplift	Max Uplift	Max Horiz
11	1	3.5 in	1.55 in	1,312 lbs	-	-38 lbs	-280 lbs	-280 lbs	148 lbs
6	1	3.5 in	1.55 in	1,312 lbs	-	-40 lbs	-287 lbs	-287 lbs	-

### Material

TC: SYP#1 2 x 6  
 BC: SYP#1 2 x 6  
 Web: SYP#2 2 x 4 except:  
 SYP#1 2 x 4: 1-10  
 SYP#1 2 x 6: 4-6

### Bracing

TC: Sheathed or Purlins at 2-8-0, Purlin design by Others.  
 BC: Sheathed or Purlins at 6-8-0, Purlin design by Others.  
 Web: One Midpoint Row: 1-10, 3-7, 4-6

### Loads

- This truss has been designed for the effects of balanced (20 psf) sloped roof snow loads in accordance with ASCE7 - 16 with the following user defined input: 25 psf GSL, Terrain B, Exposure (Ce=1.0), Thermal (Cl=1.00), DOL=1.15. If the roof configuration differs from hip/gable, Building Designer shall verify snow loads.
- This truss has not been designed for the effects of unbalanced snow loads.
- This truss has been designed for the effects of wind loads in accordance with ASCE7 - 16 with the following user defined input: 115 mph (Factored), Exposure B, Enclosed, Gable, Risk Category II, h=B-L=15 ft, End Zone Truss, Both end webs considered. DOL=1.60
- Minimum storage attic loading has not been applied in accordance with IBC 1607.1
- In accordance with IBC 1607.1, minimum BCLL's do not apply
- \*\* - Indicates parapet wind loading has been applied to members 12-1 & 13-5

### Member Forces

Table indicates: Member ID, max CSI, max tension force, (max compression force). Only forces greater than 300lbs are shown in this table.

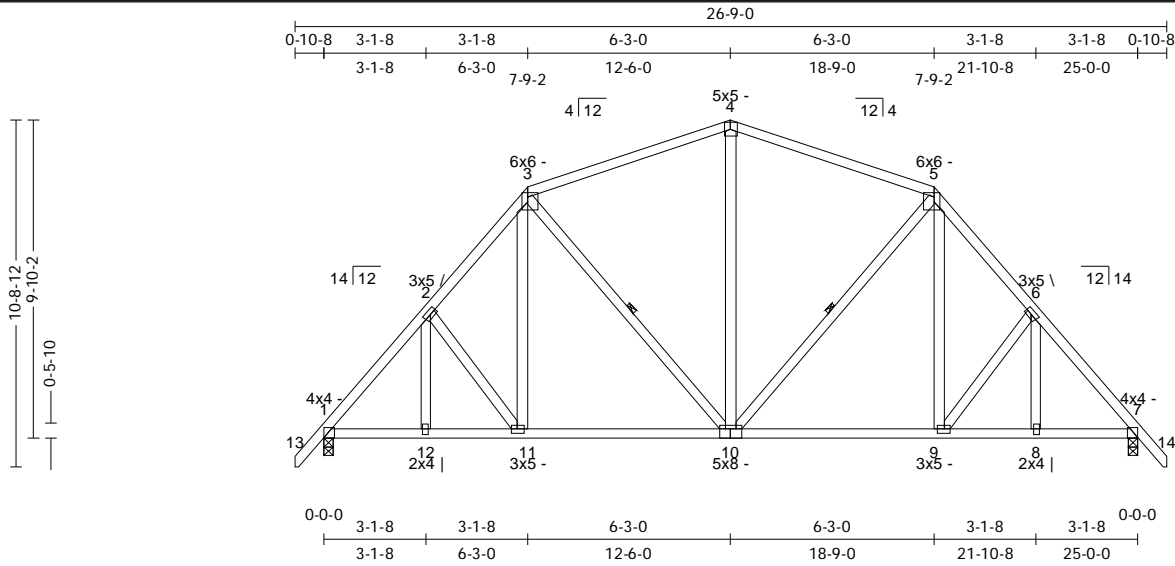
TC	1-2	0.561	1,249 lbs	(-4,633 lbs)	2-3	0.576	1,434 lbs	(-5,579 lbs)	3-4	0.349	1,057 lbs	(-3,985 lbs)
BC	6-7	0.611	3,980 lbs	(-912 lbs)	7-8	0.846	5,573 lbs	(-1,296 lbs)	8-10	0.783	4,625 lbs	(-1,118 lbs)
Web	1-11	0.432	313 lbs	(-1,223 lbs)	2-8	0.284	1,159 lbs		4-6	0.704	939 lbs	(-4,112 lbs)
	1-10	0.780	4,707 lbs	(-990 lbs)	3-7	0.514	395 lbs	(-1,636 lbs)				
	2-10	0.088		(-723 lbs)	4-7	0.136	553 lbs					

### Notes

- Unless noted otherwise, do not cut or alter any truss member or plate without prior approval from a Professional Engineer
- The fabrication tolerance for this roof truss is 20 % (Cq=0.80).
- Provide adequate drainage to prevent ponding.
- Brace bottom chord with approved sheathing or purlins per Bracing Summary
- At least one web of this truss has been designed with a panel point in the web. All panel points on such webs shall be braced laterally perpendicular to the plane of the truss. Lateral braces shall be installed within 6" of each web panel point.
- Lateral bracing shown is for illustration purposes only and may be placed on either edge of truss member.
- A creep factor of 2.00 has been applied for this truss analysis.
- The "SYP" label shown in the "Material Summary" above indicates the new SPIB design values effective June 1, 2013 were used.
- ☒ Indicates lateral bracing required perpendicular to the plane of the truss at either the midpoint (one shown) or third points (two shown), bracing by others. See BC3HB3 for additional information.
- Listed wind uplift reactions based on MWFRS & C&C loading.
- Parapet TL: 0.13 in, 2L/413 (1-2-1), Allowable 2L/120.

**WARNING:** Verify all design parameters and follow all notes on this drawing and in the Eagle Metal Design Notes. This design is for an individual building component (a truss), not a truss system, and is based only on parameters shown and provided by the Building Designer. The applicability of the design parameters must be verified by the Building Designer and should properly incorporate this design into the overall building design before use. Bracing shown is only to prevent buckling of individual truss web and/or chord members. Additional temporary and permanent bracing is always required to prevent collapse and provide stability. Design valid only when Eagle Metal connectors are used. A seal on this drawing indicates acceptance of professional engineering responsibility solely for the truss component design shown.

SPAN 25-0-0	PITCH 14/12	QTY 1	OHL 0-10-8	OHR 0-10-8	CANTL 0-0-0	CANTR 0-0-0	PLY(S) 1	SPACING 24 in	WGT/PLY 168 lbs
----------------	----------------	----------	---------------	---------------	----------------	----------------	-------------	------------------	--------------------



All plates shown to be Eagle 20 unless otherwise noted.

Loading (psf)	General	CSI	Deflection	L/	(loc)	Allowed
TCLL: 20	Bldg Code: IBC 2021/	TC: 0.43 (4-5)	Vert TL: 0.06 in	L / 999	(9-10)	L / 360
GSL: 25	TP1 1-2014	BC: 0.29 (9-10)	Vert LL: 0.02 in	L / 999	10	L / 480
TCDL: 10	Rep Mbr: No	Web: 0.05 (5-9)	Hoiz TL: 0.02 in		7	
BCLL: 0	Lumber D.O.L.: 115 %					
BCDL: 10						

### Reaction

JT	Brg Combo	Brg Width	Rqd Brg Width	Max React	Max Grav Uplift	Max MWFRS Uplift	Max C&C Uplift	Max Uplift	Max Horiz
1	1	3.5 in	1.50 in	1,052 lbs	-	-43 lbs	-181 lbs	-181 lbs	67 lbs
7	1	3.5 in	1.50 in	1,052 lbs	-	-43 lbs	-181 lbs	-181 lbs	-

### Material

TC: SYP#1 2 x 4  
 BC: SYP#1 2 x 4  
 Web: SYP#2 2 x 4

### Bracing

TC: Sheathed or Purlins at 5-8-0, Purlin design by Others.  
 BC: Sheathed or Purlins at 10-0-0, Purlin design by Others.  
 Web: One Midpoint Row: 3-10, 5-10

### Loads

- This truss has been designed for the effects of balanced (17.5 psf) and unbalanced sloped roof snow loads in accordance with ASCE7 - 16 with the following user defined input: 25 psf GSL, Terrain B, Exposure (Ce=1.0), Thermal (Ct=1.00), DOL=1.15. If the roof configuration differs from hip/gable, Building Designer shall verify snow loads.
- This truss has been designed to account for the effects of ice dams forming at the eaves.
- This truss has been designed for the effects of wind loads in accordance with ASCE7 - 16 with the following user defined input: 115 mph (Factored), Exposure B, Enclosed, Gable, Risk Category II, h=B=L=15 ft, End Zone Truss, Both end webs considered. DOL=1.60
- Minimum storage attic loading has not been applied in accordance with IBC 1607.1
- In accordance with IBC 1607.1, minimum BCLL's do not apply

### Member Forces

Table indicates: Member ID, max CSI, max tension force, (max compression force). Only forces greater than 300lbs are shown in this table.

TC	1-2	0.129	(-1,192 lbs)	3-4	0.432	305 lbs	(-774 lbs)	5-6	0.342	(-1,055 lbs)
	2-3	0.342	(-1,055 lbs)	4-5	0.432	305 lbs	(-774 lbs)	6-7	0.129	(-1,192 lbs)
BC	7-8	0.159	727 lbs	9-10	0.294	650 lbs		11-12	0.227	727 lbs
	8-9	0.227	727 lbs	10-11	0.294	650 lbs		12-1	0.159	727 lbs
Web										

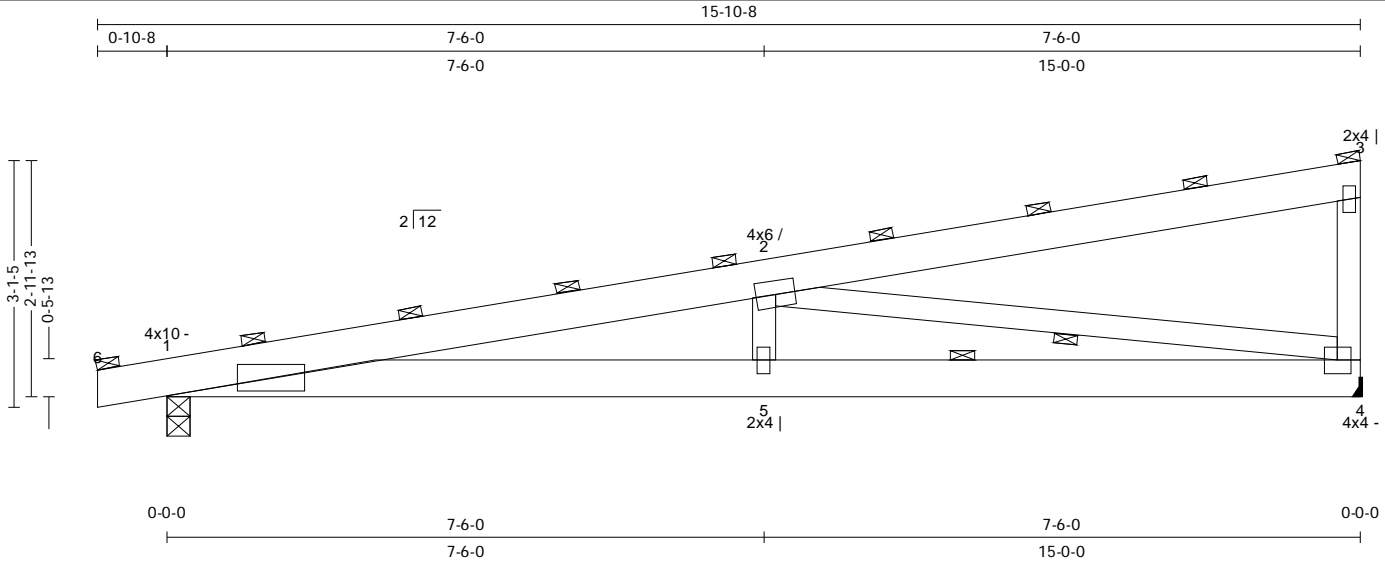
### Notes

- Unless noted otherwise, do not cut or alter any truss member or plate without prior approval from a Professional Engineer
- The fabrication tolerance for this roof truss is 20 % (Cq = 0.80).
- Brace bottom chord with approved sheathing or purlins per Bracing Summary
- Lateral bracing shown is for illustration purposes only and may be placed on either edge of truss member.
- A creep factor of 2.00 has been applied for this truss analysis.
- The "SYP" label shown in the "Material Summary" above indicates the new SP1B design values effective June 1, 2013 were used.
- ☒ Indicates lateral bracing required perpendicular to the plane of the truss at either the midpoint (one shown) or third points (two shown), bracing by others. See BCSHB3 for additional information.
- Listed wind uplift reactions based on MWFRS & C&C loading.

**CMT Components**  
8319 Ashridge Arnhem  
Sardinia, OH 45171  
(937) 446-3400

Truss: Mono  
Job:  
Designer:  
Date:  
Page:

SPAN 15-0-0	PITCH 2/12	QTY 1	OHL 0-10-8	OHR 0-0-0	CANTL 0-0-0	CANTR 0-0-0	PLY(S) 1	SPACING 48 in	WGT/PLY 83 lbs
----------------	---------------	----------	---------------	--------------	----------------	----------------	-------------	------------------	-------------------



All plates shown to be Eagle 20 unless otherwise noted.

Loading (psf)	General	CSI	Deflection	L/	(loc)	Allowed
TCLL : 21	Bldg Code : IBC 2018/	TC : 0.51 (2-3)	Vert TL: 0.26 in	L / 682	(5-1)	L / 180
GSL : 25	TP1 1-2014	BC : 0.58 (5-1)	Vert LL: 0.19 in	L / 942	(5-1)	L / 240
TCDL : 4	Rep Mbr : No	Web : 0.73 (2-4)	Hoiz TL: 0.03 in		4	
BCLL : 0	Lumber D.O.L. : 125 %					
BCDL : 4						

**Reaction**

JT	Brg Combo	Brg Width	Rqd Brg Width	Max React	Max Grav Uplift	Max MWFRS Uplift	Max C&C Uplift	Max Uplift	Max Horiz
1	1	3.5 in	1.50 in	952 lbs	-	-173 lbs	-174 lbs	-174 lbs	172 lbs
4	1	1.5 in	-	876 lbs	-	-165 lbs	-99 lbs	-165 lbs	-

**Material**

TC: SYP#1 2 x 6  
BC: SYP#1 2 x 6  
Web: SYP#2 2 x 4

**Bracing**

TC: Purlins at 24" OC, Purlin design by Others.  
BC: Sheathed or Purlins at 10-0-0, Purlin design by Others.  
Web: One Midpoint Row: 2-4

**Loads**

- This truss has been designed for the effects of balanced (16 psf) sloped roof snow loads in accordance with ASCE7 - 16 with the following user defined input: 25 psf GSL, Terrain B, Exposure (Ce = 1.0), Thermal (Qt = 1.10), DOL = 1.15. Ventilated. Unobstructed slippery surface. If the roof configuration differs from hip/gable, Building Designer shall verify snow loads.
- This truss has not been designed for the effects of unbalanced snow loads.
- This truss has been designed to account for the effects of ice dams forming at the eaves.
- This truss has been designed for the effects of wind loads in accordance with ASCE7 - 16 with the following user defined input: 115 mph (Factored), Exposure B, Enclosed, Gable/Hip, Risk Category I, h = 15 ft, Not End Zone Truss, Both end webs considered. DOL = 1.60
- Minimum storage attic loading has not been applied in accordance with IBC 1607.1
- In accordance with IBC 1607.1, minimum BCLL's do not apply
- This truss is designed as an agricultural truss which for the purposes of this program is defined as a structure that represents a low hazard to people and property. See BCSI-10 for installation and temporary bracing.

**Member Forces**

Table indicates: Member ID, max CSI, max tension force, (max compression force). Only forces greater than 300lbs are shown in this table.

TC	1-2	0.385	429 lbs	(-2,776 lbs)	BC	4-5	0.445	2,709 lbs	(-510 lbs)	5-1	0.580	2,709 lbs	(-510 lbs)
Web	2-4	0.728	518 lbs	(-2,749 lbs)	3-4	0.128							(-347 lbs)

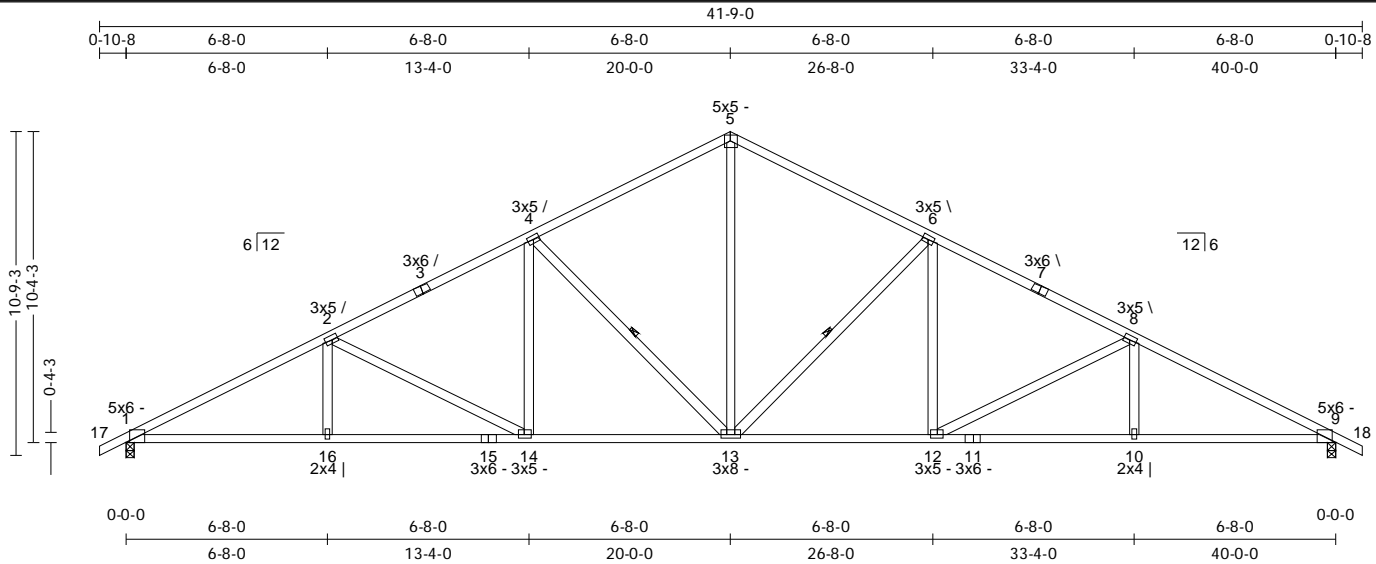
**Notes**

- Unless noted otherwise, do not cut or alter any truss member or plate without prior approval from a Professional Engineer
- The fabrication tolerance for this roof truss is 20 % (Cq = 0.80).
- Building Designer shall verify self weight of the truss and other dead load materials do not exceed TC DL 4 psf.
- Building Designer shall verify self weight of the truss and other dead load materials do not exceed BCDL 4 psf.
- Hanger is for graphical interpretation only. Install hanger per manufacturer's recommendation.
- Design assumes minimum 2x (vertical orientation, visually graded) purlins attached to the TC at purlin spacing shown with at least 2-10d nails.
- Brace bottom chord with approved sheathing or purlins per Bracing Summary
- Lateral bracing shown is for illustration purposes only and may be placed on either edge of truss member.
- A creep factor of 2.00 has been applied for this truss analysis.
- The "SYP" label shown in the "Material Summary" above indicates the new SPIB design values effective June 1, 2013 were used.
- ☒ Indicates lateral bracing required perpendicular to the plane of the truss at either the midpoint (one shown) or third points (two shown), bracing by others. See BCSHB3 for additional information.
- Listed wind uplift reactions based on MWFRS & C&C loading.

**WARNING:** Verify all design parameters and follow all notes on this drawing and in the Eagle Metal Design Notes. This design is for an individual building component (a truss), not a truss system, and is based only on parameters shown and provided by the Building Designer. The applicability of the design parameters must be verified by the Building Designer and should properly incorporate this design into the overall building design before use. Bracing shown is only to prevent buckling of individual truss web and/or chord members. Additional temporary and permanent bracing is always required to prevent collapse and provide stability. Design valid only when Eagle Metal connectors are used. A seal on this drawing indicates acceptance of professional engineering responsibility solely for the truss component design shown.

TrueBuild® Truss Software v5.8.14  
Eagle Metal Products

SPAN 40-0-0	PITCH 6/12	QTY 1	OHL 0-10-8	OHR 0-10-8	CANTL 0-0-0	CANTR 0-0-0	PLY(S) 1	SPACING 24in	WGT/PLY 209 lbs
----------------	---------------	----------	---------------	---------------	----------------	----------------	-------------	-----------------	--------------------



All plates shown to be Eagle 20 unless otherwise noted.

Loading (psf)	General	CSI	Deflection	L/	(loc)	Allowed
TCLL : 21	Bldg Code : IBC 2021/	TC : 0.56 (4-5)	Vert TL : 0.36 in	L / 999	(12-13)	L / 360
GSL : 25	TP1 1-2014	BC : 0.68 (16-1)	Vert LL : 0.17 in	L / 999	(12-13)	L / 480
TCDL : 10	Rep Mbr : No	Web : 0.72 (5-13)	Hoiz TL : 0.15 in		9	
BCLL : 0	Lumber D.O.L. : 115 %					
BCDL : 10						

**Reaction**

JT	Brg Combo	Brg Width	Rqd Brg Width	Max React	Max Grav Uplift	Max MWFRS Uplift	Max C&C Uplift	Max Uplift	Max Horiz
1	1	3.5 in	2.00 in	1,694 lbs	-	-62 lbs	-520 lbs	-520 lbs	-24 lbs
9	1	3.5 in	2.00 in	1,694 lbs	-	-62 lbs	-520 lbs	-520 lbs	-

**Material**

TC: SYP#1 2 x 4  
BC: SYP#1 2 x 4  
Web: SYP#2 2 x 4

**Bracing**

TC: Sheathed or Purlins at 2-11-0, Purlin design by Others.  
BC: Sheathed or Purlins at 7-2-0, Purlin design by Others.  
Web: One Midpoint Row: 4-13, 6-13

**Loads**

- 1) This truss has been designed for the effects of balanced (17.5 psf) and unbalanced sloped roof snow loads in accordance with ASCE7 - 16 with the following user defined input: 25 psf GSL, Terrain B, Exposure (Ce=1.0), Thermal (Ct=1.00), DOL=1.15. If the roof configuration differs from hip/gable, Building Designer shall verify snow loads.
- 2) This truss has been designed to account for the effects of ice dams forming at the eaves.
- 3) This truss has been designed for the effects of wind loads in accordance with ASCE7 - 16 with the following user defined input: 115 mph (Factored), Exposure B, Enclosed, Gable, Risk Category II, h=B=L=15 ft, End Zone Truss, Both end webs considered. DOL=1.60
- 4) Minimum storage attic loading has not been applied in accordance with IBC 1607.1
- 5) In accordance with IBC 1607.1, minimum BCLL's do not apply

**Member Forces**

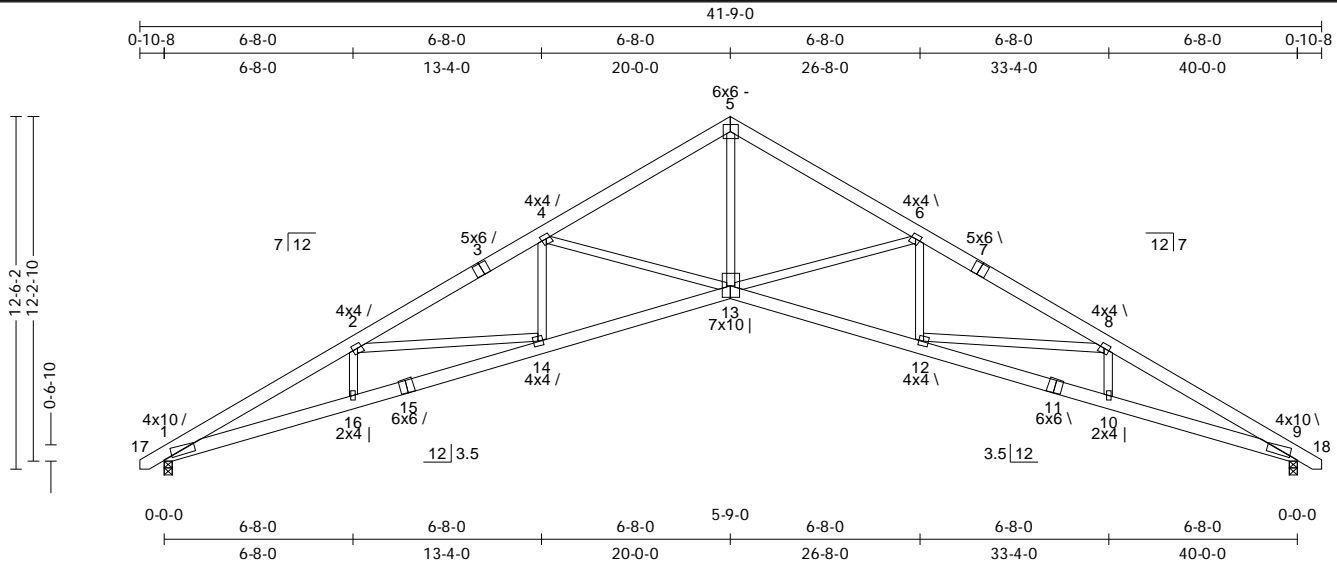
Table indicates: Member ID, max CSI, max tension force, (max compression force). Only forces greater than 300lbs are shown in this table.

TC	1-2	0.554	937 lbs	(-3,188 lbs)	4-5	0.560	742 lbs	(-1,950 lbs)	6-8	0.518	833 lbs	(-2,566 lbs)
	2-4	0.518	833 lbs	(-2,566 lbs)	5-6	0.560	742 lbs	(-1,950 lbs)	8-9	0.554	937 lbs	(-3,188 lbs)
BC	9-10	0.682	2,782 lbs	(-715 lbs)	12-13	0.543	2,213 lbs	(-462 lbs)	14-16	0.624	2,782 lbs	(-715 lbs)
	10-12	0.624	2,782 lbs	(-715 lbs)	13-14	0.543	2,213 lbs	(-462 lbs)	16-1	0.682	2,782 lbs	(-715 lbs)
Web	2-14	0.616		(-640 lbs)	5-13	0.722	1,243 lbs	(-407 lbs)	8-12	0.616		(-640 lbs)
	4-14	0.103	418 lbs		6-13	0.328	341 lbs	(-796 lbs)				
	4-13	0.328	341 lbs	(-796 lbs)	6-12	0.103	418 lbs					

**Notes**

- 1) Unless noted otherwise, do not cut or alter any truss member or plate without prior approval from a Professional Engineer
- 2) The fabrication tolerance for this roof truss is 20 % (Cq = 0.80).
- 3) Brace bottom chord with approved sheathing or purlins per Bracing Summary
- 4) Lateral bracing shown is for illustration purposes only and may be placed on either edge of truss member.
- 5) A creep factor of 2.00 has been applied for this truss analysis.
- 6) The "SYP" label shown in the "Material Summary" above indicates the new SP18 design values effective June 1, 2013 were used.
- 7) ☒ Indicates lateral bracing required perpendicular to the plane of the truss at either the midpoint (one shown) or third points (two shown), bracing by others. See BCSHB3 for additional information.
- 8) Listed wind uplift reactions based on MWFRS & C&C loading.

SPAN 40-0-0	PITCH 7/12	QTY 1	OHL 0-10-8	OHR 0-10-8	CANTL 0-0-0	CANTR 0-0-0	PLY(S) 1	SPACING 24in	WGT/PLY 261 lbs
----------------	---------------	----------	---------------	---------------	----------------	----------------	-------------	-----------------	--------------------



All plates shown to be Eagle 20 unless otherwise noted.

Loading (psf)	General	CSI	Deflection	L/	(loc)	Allowed
TCLL: 21 GSL: 25 TCDL: 10 BCLL: 0 BCDL: 10	Bldg Code: IBC 2021/ TP1 1-2014 Rep Mbr: No Lumber D.O.L.: 115 %	TC: 0.37 (8-9) BC: 0.72 (14-16) Web: 0.81 (6-13)	Vert TL: 0.64 in Vert LL: 0.32 in Hoiz TL: 0.54 in	L / 740 L / 999 9	(12-13) 13 9	L / 360 L / 480

**Reaction**

JT	Brg Combo	Brg Width	Rqd Brg Width	Max React	Max Grav Uplift	Max MWFRS Uplift	Max C&C Uplift	Max Uplift	Max Horiz
1	1	3.5 in	1.89 in	1,694 lbs	-	-62 lbs	-122 lbs	-122 lbs	-59 lbs
9	1	3.5 in	1.89 in	1,694 lbs	-	-62 lbs	-122 lbs	-122 lbs	-

**Material**

TC: SYP#1 2 x 6  
BC: SYP#1 2 x 6  
Web: SYP#2 2 x 4

**Bracing**

TC: Sheathed or Purlins at 3-1-0, Purlin design by Others.  
BC: Sheathed or Purlins at 10-0-0, Purlin design by Others.

**Loads**

- This truss has been designed for the effects of balanced (17.4 psf) and unbalanced sloped roof snow loads in accordance with ASCE7 - 16 with the following user defined input: 25 psf GSL, Terrain B, Exposure (Ce = 1.0), Thermal (Ct = 1.00), DOL = 1.15. If the roof configuration differs from hip/gable, Building Designer shall verify snow loads.
- This truss has been designed to account for the effects of ice dams forming at the eaves.
- This truss has been designed for the effects of wind loads in accordance with ASCE7 - 16 with the following user defined input: 115 mph (Factored), Exposure B, Enclosed, Gable, Risk Category II, h=B-L=15 ft, End Zone Truss, Both end webs considered. DOL=1.60
- Minimum storage attic loading has not been applied in accordance with IBC 1607.1
- In accordance with IBC 1607.1, minimum BCLL's do not apply

**Member Forces**

Table indicates: Member ID, max CSI, max tension force, (max compression force). Only forces greater than 300lbs are shown in this table.

TC	1-2	0.372	(-5,101 lbs)	4-5	0.260	(-3,332 lbs)	6-8	0.352	(-4,359 lbs)
	2-4	0.352	(-4,359 lbs)	5-6	0.260	(-3,332 lbs)	8-9	0.372	(-5,101 lbs)
BC	9-10	0.695	4,503 lbs	12-13	0.531	3,857 lbs	14-16	0.721	4,527 lbs
	10-12	0.721	4,527 lbs	13-14	0.531	3,857 lbs	16-1	0.695	4,503 lbs
Web	2-14	0.531	(-678 lbs)	5-13	0.694	2,829 lbs	8-12	0.531	(-678 lbs)
	4-14	0.092	375 lbs	6-13	0.806	(-966 lbs)			
	4-13	0.806	(-966 lbs)	6-12	0.092	375 lbs			

**Notes**

- Unless noted otherwise, do not cut or alter any truss member or plate without prior approval from a Professional Engineer
- The fabrication tolerance for this roof truss is 20 % (Cq = 0.80).
- Brace bottom chord with approved sheathing or purlins per Bracing Summary
- A creep factor of 2.00 has been applied for this truss analysis.
- The "SYP" label shown in the "Material Summary" above indicates the new SPIB design values effective June 1, 2013 were used.
- Listed wind uplift reactions based on MWFRS & C&C loading.